

**HAMACO GmbH**  
Berkenstr. 12  
D-58640 Iserlohn  
Germany  
P +49 (0)2371 / 9761-5  
F +49 (0)2371 / 9761-60  
I [www.hamaco.de](http://www.hamaco.de)  
E [info@hamaco.de](mailto:info@hamaco.de)

**Fully equipped operating shielding cabin**  
Specially for neuro-surgery including integrated diagnostics

## NeuroSUITE





## Fully equipped operating shielding cabin specially for neuro-surgery including integrated diagnostics

The NeuroSUITE is an operating room for neuro surgery and offers technology on the highest available level. NeuroSUITE combines image guided surgery, interoperative MRI, and modern imaging and evaluation procedures.

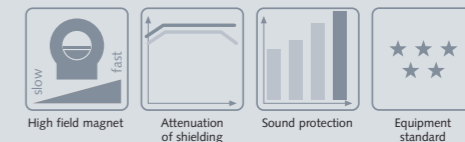
Diagnostical and interoperative data can be displayed at the same time on a specially developed, large-scale wall screen, and therefore can be ideally brought together. Concepted as unsupported room construction, the NeuroSUITE meets the required sound protection and attenuation of shielding requirements in connection with the operation of the integrated MRI-system.

The fully equipped copper-shielded high frequency cabin is fully decoupled from the main shell in sound, and the ex factory pre-fabricated modules guarantee a short installation time on location.

## Equipment and accessories

In order to fulfil the strict hygiene regulations of a neurosurgical operating room there are two variations of the interior finish available: The classic high-quality stainless-steel surface and a backlit glass. The satined glass wall surface is fully backlit indirectly via LEDs in different colours, and creates a pleasant, nearly shadow-free surrounding.

## Equipment series



## Air conditioning

The backlit integrated ventilation ceiling over the operating table guarantees the required air conditioning and the needed air exchange. Optimally sorted withdrawal stations in the wall area for surgery and anaesthetics provide simple handling during examination and operation.

## Lighting

Next to the light wreath flush to the ceiling and the integrated MRI-compatible downlight, a swivelling operating lamp provides shadow-free lighting of the operating room.

The entire cabin lighting and the installed hardware is controlled over a touchscreen integrated into the wall.

## NeuroSUITE

### Short description

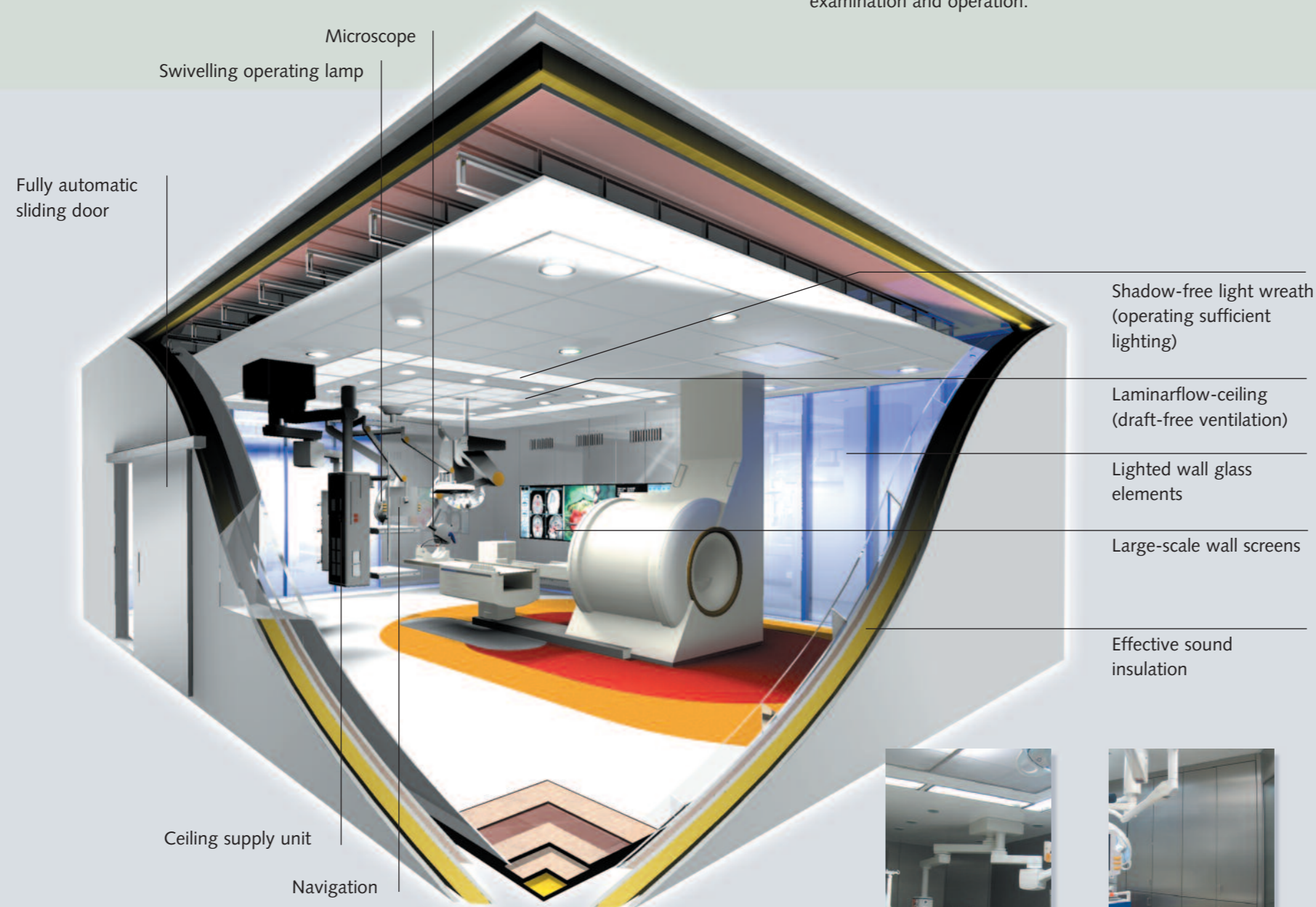
- Image guided surgery (IGS)
- Intraoperative MRI
- Modern imaging and evaluation procedures
- State-of-the-art technology
- Sound protection and attenuation of shielding

### Technology

- Unsupported and modular construction
- Full decoupling in sound from the existing main body
- Stainless steel or glass surface finish
- Air conditioning and air exchange
- Withdrawal stations in the wall area for surgery and anaesthetics
- Shadow-free light wreath flush to the ceiling
- Integrated MRI-compatible downlights
- Touchscreen-control

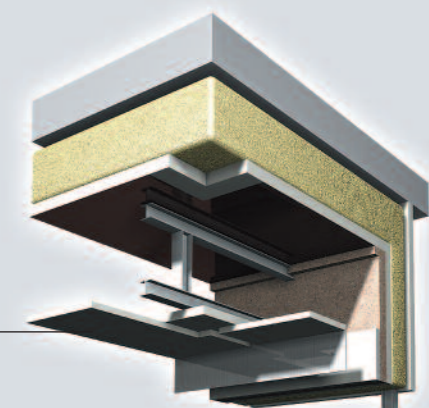
### HAMACO-Service

- Individual consulting and planning
- Pre-fabricated ex factory
- Short assembly times
- Basically clean assembly
- Ready to use handover

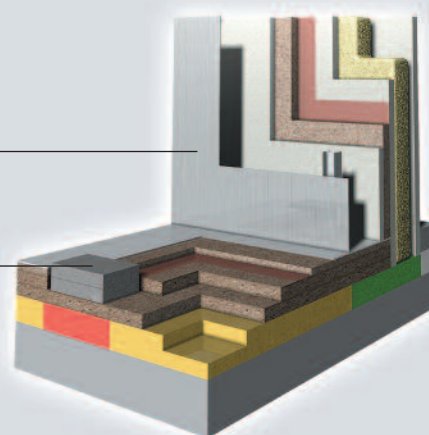


## Floor, wall and ceiling construction

Cross-sectional view shows construction of the NeuroSUITE



Operating-compatible, reversible, modular intermediary ceiling



Stainless steel or glass surface finish

Magnet foot bearing in the system floor integrated on special attenuation elements

